



9689 SE Driftwood Dr.  
Port Orchard, WA 98367

# Friends of Wilson Creek

[www.FriendsOfWilsonCreek.com](http://www.FriendsOfWilsonCreek.com)

February 15, 2009

*A neighborhood group working to restore the health of Wilson Creek*

## Thank You!

Thanks to our many volunteers, and our grants from Kitsap County's Stream Team and the National Fish & Wildlife Foundation, 2008 was a very busy year for Wilson Creek.

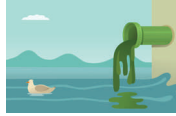
We've had several really productive work parties where more than 100 volunteers attacked the Himalayan blackberry that was threatening to take over the Wilson Creek estuary. Together, we planted over 1700 native plants, shrubs, and trees in the watershed!

**Did they survive the snow?** While, some of our fledglings look like they've suffered in the recent harsh weather and flooding, we're hopeful that, like the rest of us, they'll rally with the approach of spring. For added insurance, we've purchased 500 additional native plant starts from the Kitsap and Pierce Conservation Districts. These **MUST** be planted this spring, so **WE NEED YOUR HELP AGAIN!**

**Don't Forget...** *Everyday we make choices that affect our environment.* Proper disposal of all kinds of waste is one of the best things we can do to keep our waters pure. Don't just pour household products and chemicals down the drain. That black hole empties right into our watershed! If you're not sure, about the proper way of disposing anything, call Kitsap County's **Open Line** at **360-337-5777** or online: [www.kitsapgov.com/sw](http://www.kitsapgov.com/sw).

**Wasn't part of the beach closed?** Yes and the Driftwood Cove beach still remains closed to shellfish harvesting, due to a high fecal colony count (FCC) the Department of Health found. A source hasn't been identified, and the Health Department is continuing to monitor the area. Our FOWC volunteers also regularly collected samples at 8 sites along the creek for monthly FCC testing in 2008.

We really wanted to see if something about the stream is creating a less than ideal habitat for our native fish, so we brought in more science.



### What kind of science?

Grant funding allowed us to hire a fisheries biologist and a geologist to assess existing watershed conditions. With these scientists and additional aid from a wetland specialist, we conducted a preliminary habitat survey of the accessible areas of the stream. To help us out, we purchased a GPS instrument with grant funds which enabled us to map the creek and to identify many culverts and potential blockages.

**Further efforts** included a professional tree analysis, purchase of a flow meter this fall, and a test for pesticides, herbicides, nutrients, & heavy metals. So far, Wilson Creek has a pretty clean bill of health...great news for the several salmon we were so excited to see spawning this fall. With your help, the stream will be a healthy nursery for their offspring

**FISH FACT:** Chinook salmon may spend between 1 to 8 years in the ocean before returning to their natal streams to spawn, though the average is 3 to 4 years.

## Next Work Party

**Saturday, April 18  
8:30-11:30**

We really do have fun at our work parties. The age range is from pre-school into the "golden" years, with plenty of hefty scouts & students working together. **Check the website for directions and instructions**, and while you're there, check out the amazing photos of the wildlife that call Wilson Creek their home.



**PLEASE RECYCLE!**

## STOP THE PRESSES!

Puget Sound Partnership has chosen to tour four sites here in Kitsap County where education and advocacy and restoration are taking place. The four are:

- Stillwaters in Kingston
- Fish Park in Poulsbo
- Illahee Forest Stewardship and Neighbors Sites
- Wilson Creek

We were chosen as one of the four! The group will be touring the four locations on **Sunday, March 1**. Needless to say, we're very excited about the additional exposure this will bring to Wilson Creek!

Watch the website for details!

**In This Mailing...** are 2 county brochures, one on **Controlling Structural Pests** (lots of ways to keep the creepy crawlies from moving into our homes), and another on the **2Good2Toss.com** program for recycling reusable household items and surplus building materials.

If you have a construction project going, check out Tacoma Company at [Recovery1.com](http://Recovery1.com). They recycle construction debris, even carpet! But don't just show up with a load - call to check on environmental requirement 1st.